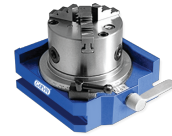


RAPID INDEXER HORIZONTAL & VERTICAL



- Rapid Indexer With Chuck
- Gear Ratio 24:1
- Manufacturing from closed grained cast iron.
- 3 jaw Self Centering Lathe chuck included.
- Compact vertical & horizontal bi-directional rapid indexer.
- Simply depress lever and rotate chuck to index every 15 degrees.

GARVIN[®]
T O O L S

CAT.NO.	BASE DIMENSION	CENTER HEIGHT	3 JAW CHUCK
GRI-1010	120 x 120 x 62mm	65mm	80mm
GRI-1011	145 x 145 x 62 mm	80mm	100mm
GRI-1012	160 x 160 x 62 mm	85mm	125mm



www.garvintools.com