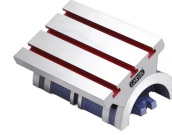


TILTING TABLE - ADJUSTABLE ANGLE PLATES



- Heavy and sturdy machined castings
- Range 45° each way from vertical
- Locking action by 2 clamping screws on each end
- Low profile for low machine head clearance
- 3 machined "T" slots and ground table surface

The primary feature of a tilting table is its ability to tilt or incline to different angles. This adjustability allows machinists to set specific angles for milling, drilling, grinding, or other machining operations. A tilting table, also known as an adjustable angle plate, is a versatile tool used in machining and metalworking to achieve precise angles during various operations.

Cat. No.	Size		Height	
	Inch	mm	Inch	mm
GTT-0190A	4 x 5	100 x 125	3-1/8	78
GTT-0183	5 x 7	125 x 175	3-3/4	95
GTT-0184	7 x 10	175 x 250	5	125
GTT-0185	10 x 15	250 x 380	6-3/4	170



www.garvintools.com