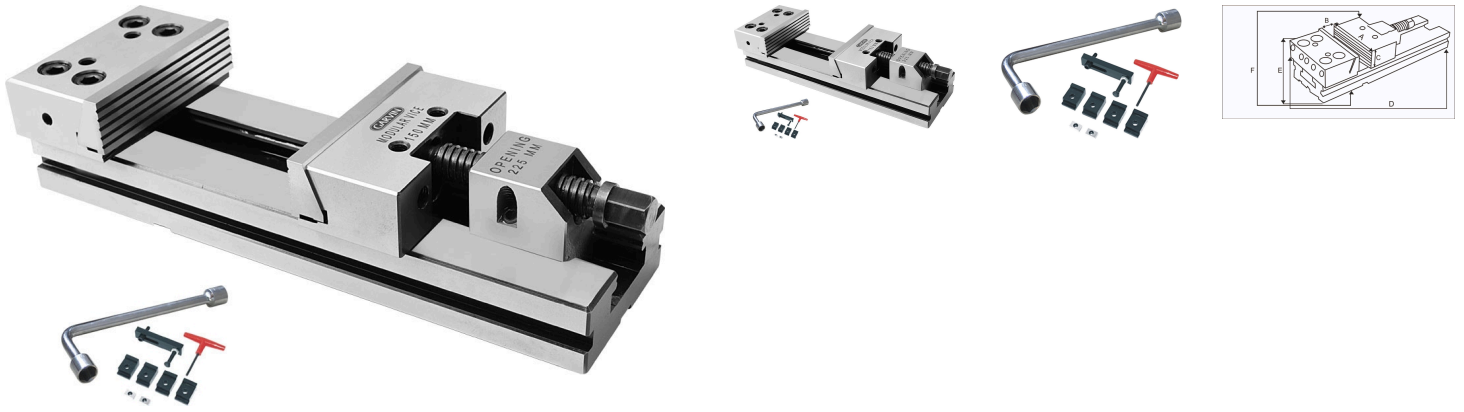


PRECISION MODULAR STEEL VISE



- High Precision High Alloy Steel Vise with Maximum Rigidity with Case Hardening upto 60 ± 2 HRC.
- The space saving design and solid construction allow a maximum blocking ratio to total overall dimension of the vise.
- It Features quick Clamping Sliding in the Vise of Base Slide. The Clamping is secured with the Main Screw and allows 4 further Interchangeable clamping system like Hydralic, pneumatic, Manual Hyrdraulic.
- Both jaws bodies are built in one solid piece (no slides or key-nuts) in order to guarantee higher rigidity & no bending.
- Both Jaw plates are manufactured with a pull down angle. This ensure, during the clamping operation, a downward run of the workpiece against the vise base (by dragging) and thus a precise and safety clamping.

CAT No.	JAW WIDTH	JAW OPENING	JAW DEPTH	OAL	HEIGHT X WIDTH	TENON SLOT SIZE	APPROX WEIGHT
	A (MM)	B (MM)	C (MM)	D (MM)	E X F (MM)	.	In Kgs
GMV-6475	100	130	40	325	70 x 102	16	9
GMV-6476	125	175	40	375	90 x125	16	17
GMV-6477	150	225	50	450	98 x 150	16	27
GMV-6478	150	300	50	525	98 x 150	16	30
GMV-6479	200	300	60	555	118 x 203	16	48
GMV-6480	200	400	60	655	118 x 203	16	54



www.garvintools.com